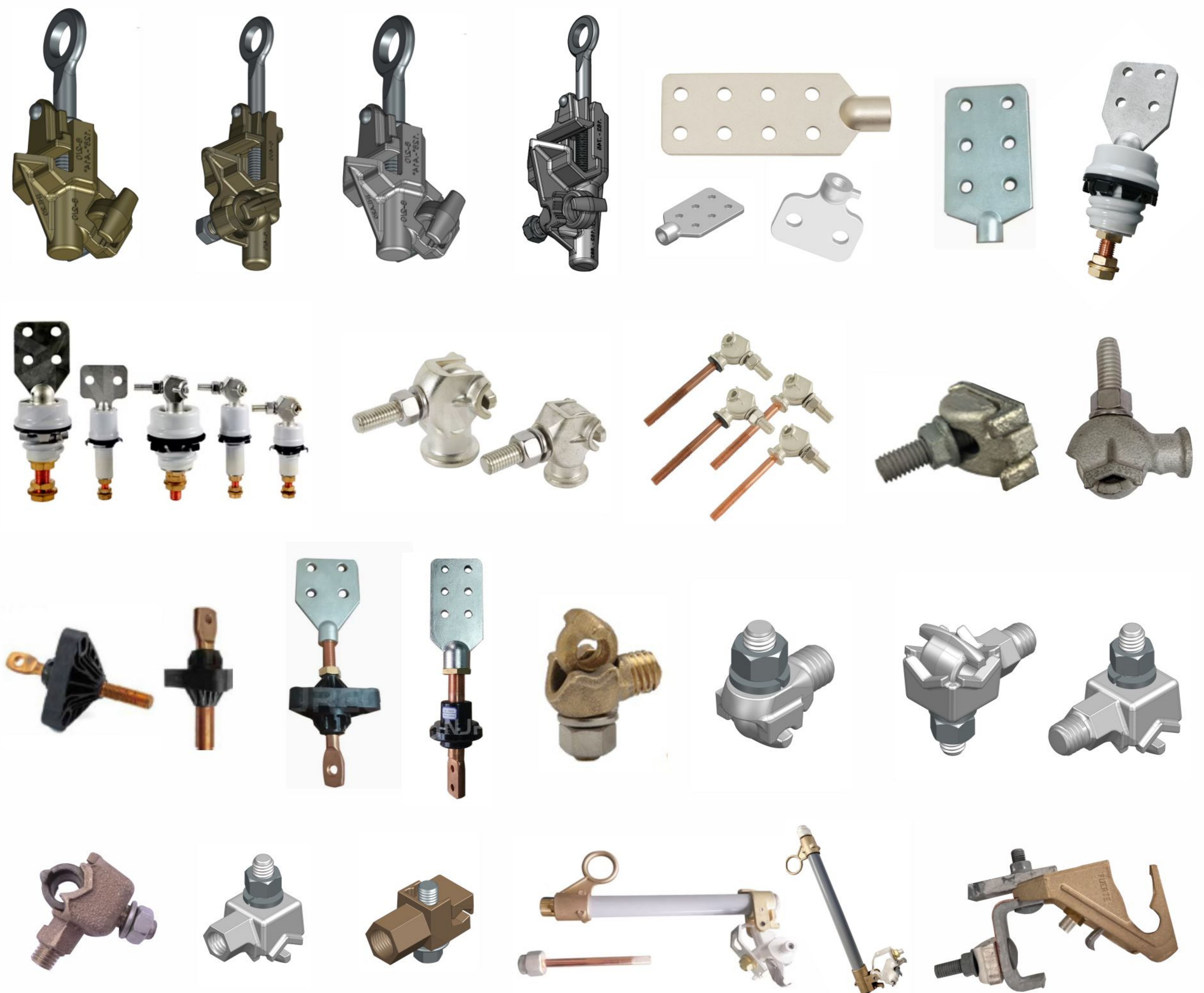


Electrical Products Transmission and Distribution



Cost Effective & Quality Metal Solutions

INTRODUCTION OF THE COMPANY

Indian Metals Solutions Private Limited (IMS) is a fast-growing manufacturing company based in Gujarat, India, established in 2021. The company specializes in ferrous and non-ferrous metal casting, forging, machining, and assembly components serving a wide range of industries such as electrical, oil & gas, plumbing & railways. With manufacturing facilities in India and a global network, the company caters to Domestic and International markets

The organization focuses on delivering high-quality, cost-effective, and precision-engineered components of Metals and Engineering Polymers supported by modern infrastructure and advanced manufacturing processes.

WHY CHOOSE IMS?

1. End-to-End Solutions

IMS provides complete solutions—from manufacturing and machining to supply chain management and warehousing—ensuring smooth operations for clients.

2. Strong Industry Experience

The company is backed by a leadership team with decades of combined experience in industrial sectors.

3. Commitment to Quality

IMS follows strict quality control systems and is ISO 9001:2015 certified & Type tested certified products ensuring reliable and consistent quality

4. Advanced Manufacturing Capabilities

The company offers multiple products line which can be used in various industries

- Metal castings and Forgings
- Sheet metals Components
- Machined Components
- Engineering Polymer Products
- Tailor made OEM Products

5. Global Reach & Competitive Pricing

With a global supply network and efficient production systems, IMS delivers products at competitive prices while maintaining international quality standards.

CERTIFICATES



ELECTRICAL POWER DISTRIBUTION HARDWARE

- 03 | Bronze Hot line Clamps
- 04 | Aluminum Hot line Clamps



TRANSFORMER CONNECTION HARDWARE

- 05 | Spade Terminals (NEMA)
- 06 | ANSI Transformer Bushing
- 07 | TRI-clamp/triangular Transformer Bushing



TANK GROUND CONNECTOR

- 08 | Transformer Tank Type GTCL: 90°
- 08 | Ground Clamp Straight Ground Mount (Tank Type GTCS : 90°)



GROUNDING TERMINALS

- 09 | TYPE - LAT (Lighting Arrester)
- 09 | TYPE - LAT (Arrester Terminals)



CUTOUT FUSE HOLDERS

- 10 | CUT OUT ASSEMBLY- FUSE HOLDERS
 - High-voltage standard drop out fuse holders
 - Hinge Connector Assembly for Dropout Fuse Cutout

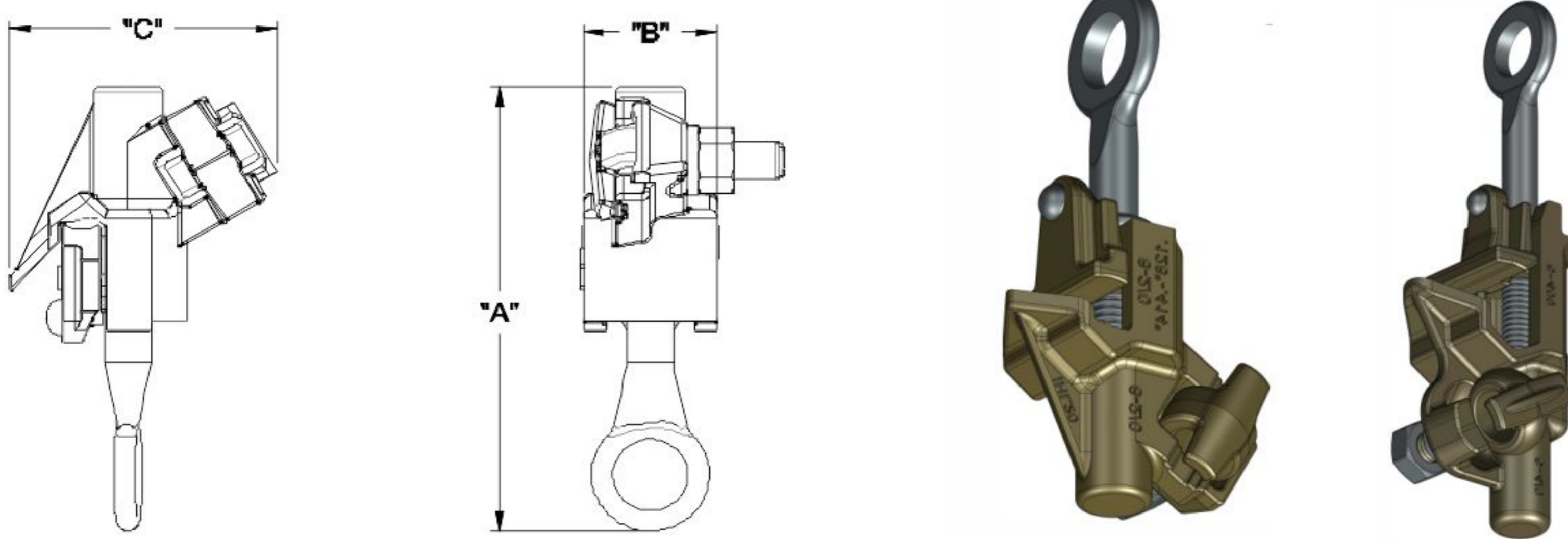


ELECTRICAL POWER DISTRIBUTION HARDWARE

Bronze Hot line Clamps

Application :

- Hot Line Clamps are designed for installing or removing distribution tap connections with standard hot line tools and equipment.
- Tested per ANSI C119.4.
- Extended jaw for greater conductor contact.
- Copper alloy castings offer high strength and corrosion resistance.



PART NUMBER	DESCRIPTION	CONDUCTOR RANGE		DIMENSIONS (IN.)		
		MAIN	TAP	A	B	C
IHL20	Bronze Hot Line Clamp #8-2/0	#8 Sol - 2/0 Str .128" - .414"	#8 Sol - 2/0 Str .128" - .414"	4.83	1.25	2.50
IHL20T	Bronze Hot Line Clamp #8-2/0 - Tin Plated	#8 Sol - 2/0 Str .128" - .414"	#8 Sol - 2/0 Str .128" - .414"	4.83	1.25	2.50
IHL30	Bronze Hot Line Clamp #6-400MCM	#6 Sol - 400 Str .162" - .713"	#6 Sol - 4/0 Str .162" - .547"	6.68	1.38	2.30
IHL30T	Bronze Hot Line Clamp #6-400MCM - Tin Plated	#6 Sol - 400 Str .162" - .713"	#6 Sol - 4/0 Str .162" - .547"	6.68	1.38	2.30
IHL40	Bronze Hot Line Clamp 4/0-800	#4/0 - 800 MCM .502" - 1.031"	#4 - 350	6.63	4.87	2.81
IHL40T	Bronze Hot Line Clamp 4/0-800 - Tin Plated	#4/0 - 800 MCM .502" - 1.031"	#4 - 350	6.63	4.87	2.81

Electrical Rating:

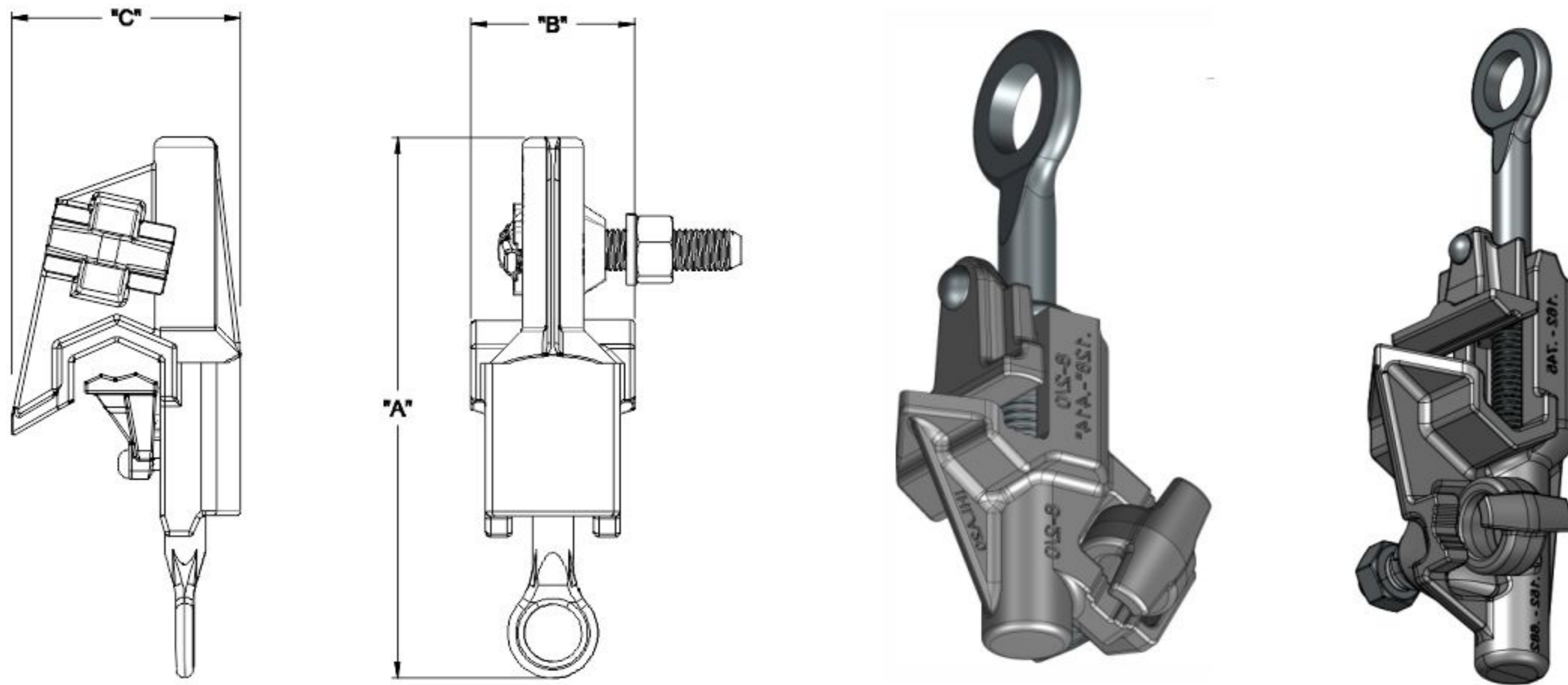
- Voltage Rating : 11 KV to 400 KV
- Continuous Operating Temperature : -40°C to +105°C

Standards:
ANSI C119.4



Application :

- Hot Line Clamps are designed for installing or removing distribution tap connections with standard hot line tools and equipment
- Tested per ANSI C119.4
- Extended jaw for greater conductor contact.
- Aluminum alloy castings offer high strength and corrosion resistance.
- Lightweight and easy handling
- Higher electrical conductivity
- Lower cost
- Best suited for ACSR / Aluminum networks



PART NUMBER	DESCRIPTION	CONDUCTOR RANGE		DIMENSIONS (IN.)		
		MAIN	TAP	A	B	C
IHLA20	Aluminum Hot Line Clamp #8-2/0	#8 Sol - 2/0 Str .128" - .414"	#8 Sol - 2/0 Str .128" - .414"	4.83	1.25	2.50
IHLA30	Aluminum Hot Line Clamp #6-400MCM	#6 Sol - 400 MCM .162" - .745"	#6 Sol - 4/0 Str .162" - .547"	7.49	1.78	2.51
IHLA40	Aluminum Hot Line Clamp #6-400MCM-Heavy Hex Nut	#6 Sol - 400 MCM .162" - .745"	#6 Sol - 4/0 Str .162" - .547"	6.75	1.75	2.50
IHLA60	Aluminum Hot Line Clamp 4/0-800	#4/0 - 800 MCM .502" - 1.031"	#8 Sol - 2/0 Str .198" - .703"	6.62	2.00	2.81

Electrical Rating:

- Voltage Rating : 11 KV to 400 KV
- Continuous Operating Temperature : -40°C to +90°C

Standards:
ANSI C119.4

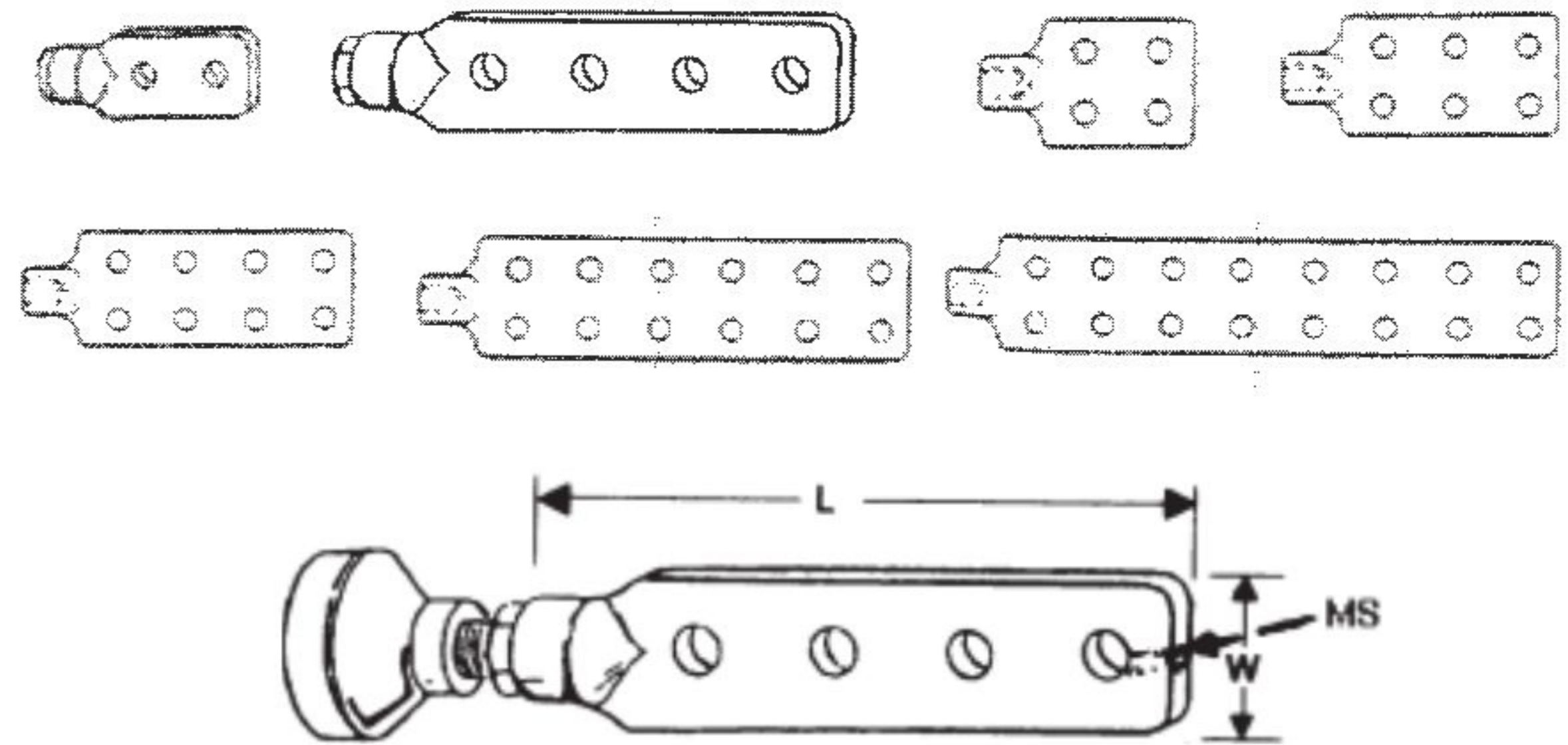
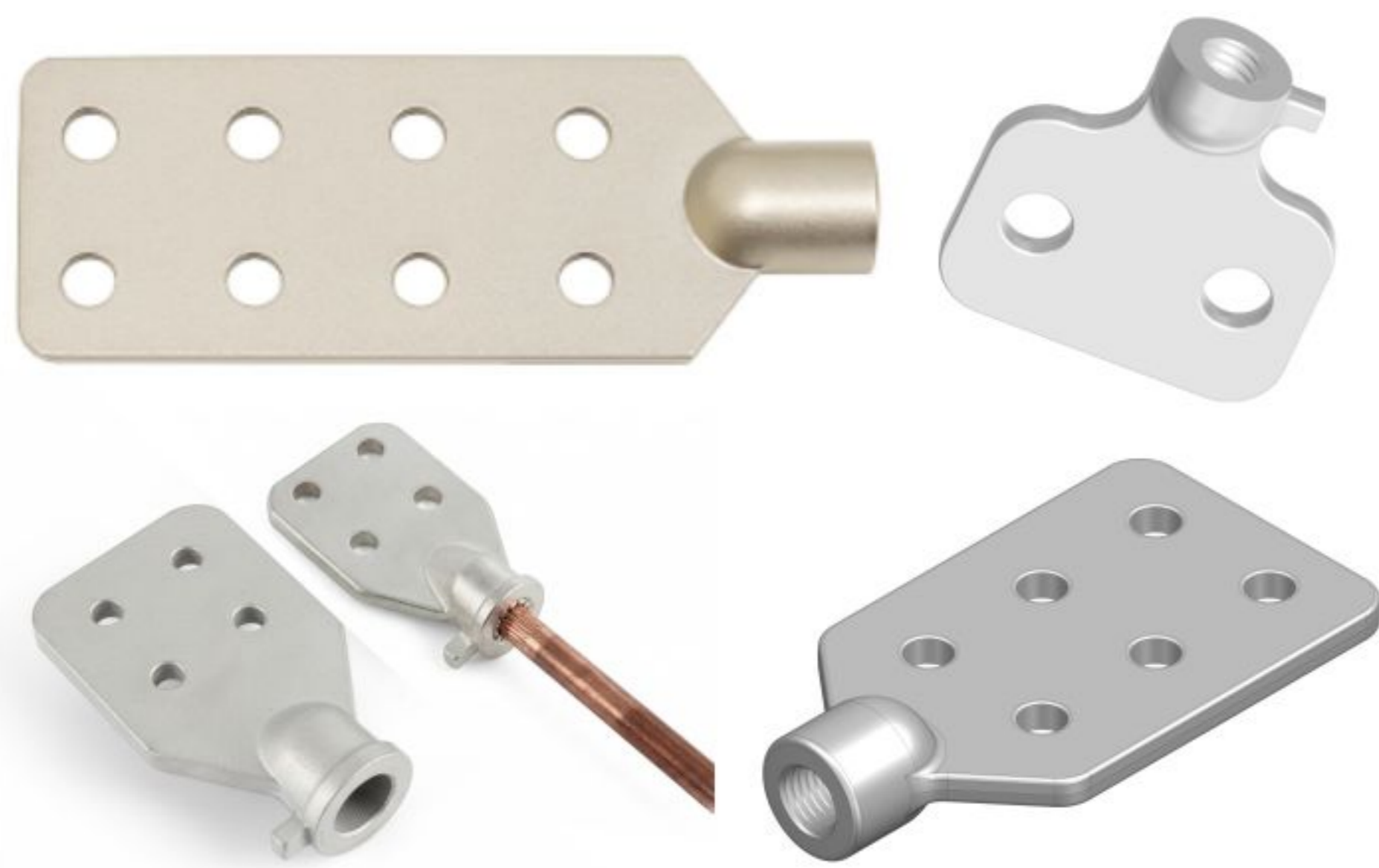


TRANSFORMER CONNECTION HARDWARE

Spade Terminals (NEMA)

Application :

- Bronze Spade Terminals are widely used for making secure electrical connections on transformer bushings, grounding points, and terminal pads—especially in medium- and low-voltage distribution systems.
- Secured by jam nut to bushing stud.
- Terminal lug mounting holes are 9/16" diameter with 1-3/4" NEMA spacing.
- 2-hole spade NEMA (e.g., 1.75" spacing) use in Small LV bushings
- 4-hole spade NEMA use in Medium current connections
- 6-hole and more than 6-hole spade NEMA use in High-current transformer terminals



PART NUMBER	X'FORMER STUD SIZE	DIMENSIONS INCHES (mm)		
		LENGTH	WIDTH	HEIGHT
ITS01	5/8"-11	5.12 (130)	1.37 (35)	0.31 (8)
ITS02	1"-14	5.06 (129)	1.93 (49)	0.34 (9)
ITS03	5/8"-11	8.50 (216)	1.37 (35)	0.31 (8)
ITS04	1"-14	8.56 (218)	1.93 (49)	0.34 (9)
ITS05	5/8"-11	8.50 (216)	1.37 (35)	0.31 (8)
ITS06	1"-14	8.56 (218)	2.00 (50)	0.34 (9)
ITS07	5/8"-11	5.37 (136)	3.50 (89)	0.25 (6)
ITS08	1"-14	5.87 (149)	3.50 (89)	0.37 (9)
ITS09	5/8"-11	5.37 (136)	3.50 (89)	0.25 (6)
ITS10	5/8"-11	6.62 (168)	3.50 (89)	0.37 (9)
ITS11	1"-14	7.00 (178)	3.50 (89)	0.37 (9)
ITS12	1"-14	7.00 (178)	3.50 (89)	0.37 (9)
ITS13	5/8"-11	8.37 (213)	3.50 (89)	0.37 (9)
ITS14	1"-14	8.75 (222)	3.50 (89)	0.37 (9)
ITS15	1-1/4"-12	7.12 (181)	3.50 (89)	0.37 (9)
ITS16	1-1/4"-12	9.12 (232)	3.50 (89)	0.37 (9)
ITS17	1-1/4"-12	14.00 (356)	4.00 (102)	0.50 (13)
ITS18	1-1/4"-12	17.50 (445)	4.00 (102)	0.50 (13)

Electrical Rating:

- Voltage Rating
600 V /1 KV to 69 KV

Standards:

NEMA Cc1

ANSI Transformer Bushing (Eyebolts & Flat Spade Type)

Application :

- Low Voltage (LV) Bushings are designed for use in distribution transformers to provide a safe and insulated passage for conductors through grounded transformer tanks. These bushings ensure reliable electrical performance along with strong mechanical support for external connections.
- These ANSI standard transformer bushings are used for pole-mounted distribution transformer, with rated voltage from 1 KV to 46KV, and rated current from 125A to 5000A
- 1.2KV from 125A to 833A



Figure-1



Figure-2



Figure-3



Figure-4

PART NUMBER	WIRE RNGE	STUD/THREAD SIZE	IMAGE	VARIANT TYPE
ILV 521	6-4/0 STR	3/8"-16 /M10	Figure-1	Eyebolt type
ILV863	6-4/0 STR	3/8"-16 /M10	Figure-1	Eyebolt type
ILV865	6-350VMCM	1/2"-13/ M12	Figure-1	Eyebolt type
ILV 521-S	6-4/0 STR	3/8"-16 /M10	Figure-2	Thread studs
ILV863-S	6-4/0 STR	3/8"-16 /M10	Figure-2	Thread studs
ILV865-S	6-350VMCM	1/2"-13/ M12	Figure-2	Thread studs
ILV-521-AS	6-4/0 STR	3/8"-16 /M10	Figure-3	Complete assy
ILV-863-AS	6-4/0 STR	3/8"-16 /M10	Figure-3	Complete assy
ILV-865-AS	6-350VMCM	1/2"-13/ M12	Figure-3	Complete assy
ILV-2H-AS	-	1/2"-13/ M12	Figure-4	2 hole spade
ILV-4H-AS	-	5/8"-11/ M16	Figure-4	4- Hole spade

ASSEMBLY PARTS	DESCRIPTION	MATERIAL
Porcelain Insulator	Main bushing body	Porcelain (glazed)
Copper Stem (LV conductor)	Conductive central rod	Copper
Terminal (Eyebolt)	Cable connection point	Aluminum-bronze
Brass/Bronze Connector	Adapts stud to terminal	Brass/Zinc-plated
Brass Nut(s)	Secures terminal hardware	Brass
Steel Nut(s)	Secures assembly	Stainless steel
Washer(s)	Provides contact & locking	Stainless/Brass
Spring Washer(s)	Provides anti-loosening action	Stainless steel
Plain Gasket	Seals around tank penetration	NBR rubber

Voltage Rating:

- 1.1 kV to 3 kV

Standards:

- IEC 60137
- IEEE C57.19.01

TRI-clamp/triangular Transformer Bushing

Application :

- These have a triangular mounting flange used to secure the bushing to the transformer tank or box and provide termination points for cables or connectors.
- Tri-Clamp Molded Bushing
- The tri-clamp molded integral bushings are designed for pad-mounted distribution transformers. The bushings are molded from high performance glass-reinforced resin system and copper studs.
- Application temperature -40~140°C, Indoor condition without salt fog and chemical corrosion;
- Conductor material: copper C11000;
- Color of insulation body: black;
- Recommended dia.of tank hole:45.0+0.5 mm.
- 60 Hz 1-min Withstand RMS Voltage - (~10-11 kV)



PART NUMBER	STUD OD (IN)	CURRENT RATINGS (A)	VOLTAGE RATINGS (kV)	DIMENSIONS (IN.)			
				A	B	C	(T)THREAD
ILV-600	5/8"(14.2mm)	600	1.2, BIL30	6.75	1.75	1.75	5/8"-11
ILV-1200	1.0"(24.0mm)	1200	1.2, BIL30	7.00	1.75	3.00	1"-14
ILV-2100	1.25"(31.75mm)	2100	1.2, BIL30	8.81	1.75	3.87	1-1/4"-12

Testing:

Both parts are tested as per : IEC60137 and IEEE386 related content.

Electrical Rating:

- Continuous Operating Temperature : -40°C to +140°C

Standards:

IEC 60137
IEEE386

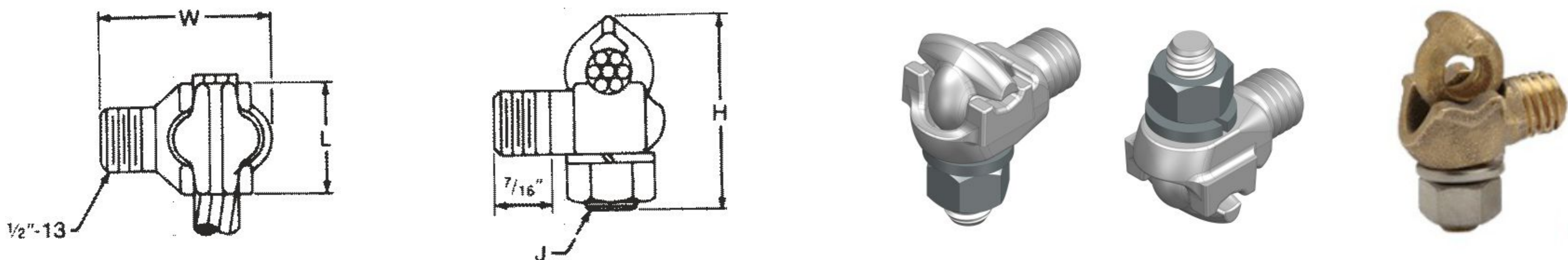


TANK GROUND CONNECTOR

Transformer Tank Type GTCL: 90°

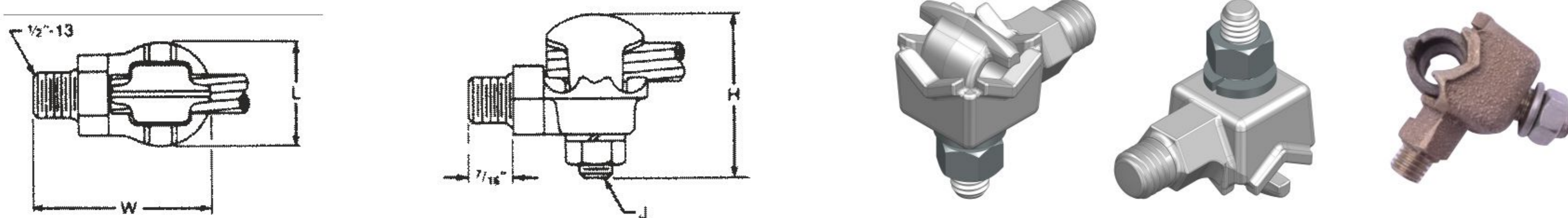
Application :

- Bronze alloy ground clamp for tapping copper conductor to transformer tank
Tapered threads at base of stud ensure positive locking and electrical contact without lockwashers
- Use to Pole-mounted distribution transformers, Pad-mounted transformers, Substation equipment and Neutral grounding connections



PART NUMBER	COPPER CABLE RANGE	APPROX. DIMENSIONS INCHES (MM)				STUD THREAD SIZE
		L	H	W	J	
ITCL10	#10 Sol. – #1 Str.	7/8 (22.2)	1-1/2 (38.1)	1-3/8 (34.92)	3/8 (9.52)	1/2 - 13
ITCL8	#8 Sol. – 2/0 Str.	1 (25.4)	1-7/8 (47.62)	1-17/32 (38.89)	3/8 (9.52)	1/2 - 13

Ground Clamp Straight Ground Mount Four Way Type (Tank Type GTCS : 90°)



PART NUMBER	COPPER CABLE RANGE	APPROX. DIMENSIONS INCHES (MM)				STUD THREAD SIZE
		L	H	W	J	
ITCS10	#10 Sol. – #1 Str.	1-1/8 (28.58)	1-5/8 (41.28)	1-7/8 (47.62)	3/8 (9.52)	1/2 -13
ITCS8	#8 Sol. – 2/0 Str.	1-1/4 (31.75)	1-7/8 (47.62)	2-1/4 (57.27)	3/8 (9.52)	1/2 -13
ITCS6	#6 Sol.—250 MCM	1-5/8 (41.28)	2-3/8 (60.32)	2-1/2 (63.5)	1/2 (12.7)	1/2 -13

Electrical Rating:

- Voltage rating : 600 V

Standards:

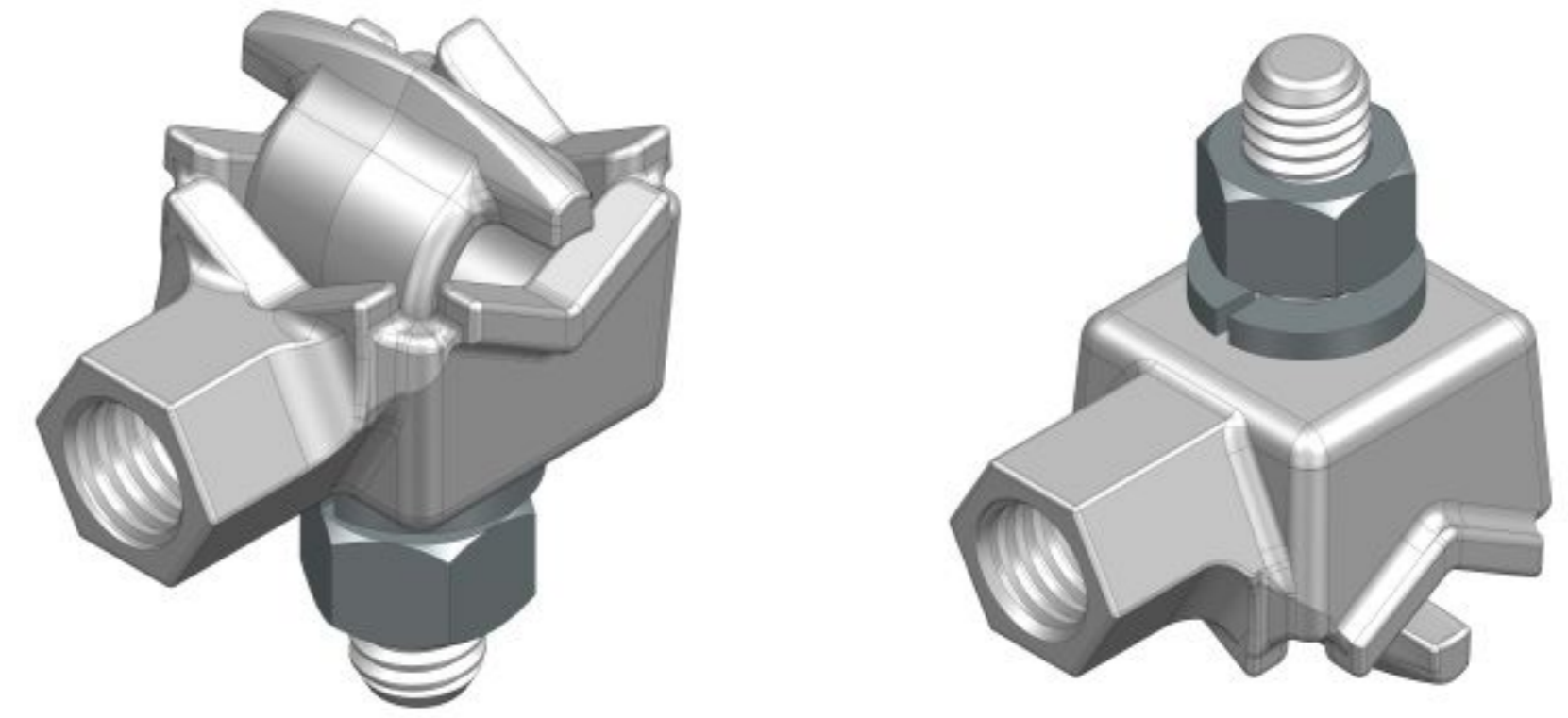
NEMA CC1
IEEE 837



TYPE - LAT (Lighting Arrester)

Application :

- This versatile bronze connector can be mounted to a drilled plate, structure or bar using a 3/8"-16 cap screw.
- It can also be screwed onto a 3/8"-16 bushing stud and secured in place with the included am nut.
- The eyebolt can be positioned within the body to allow either vertical or horizontal conductor entrances.

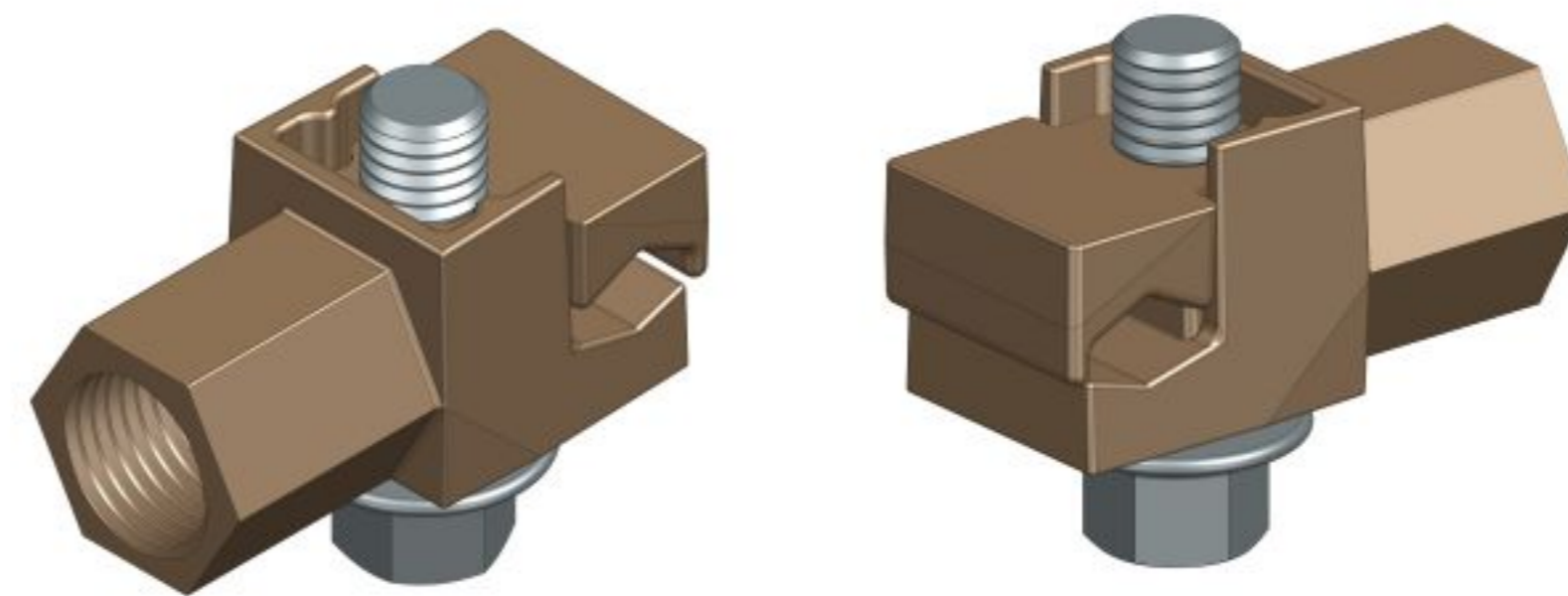


PART NUMBER	STUD SIZE	CONDUCTOR RANGE O.D.	APPROX. WT. EACH LBS. (KG)
ILAT20	3/8" - 16	8 Sol. - 2/0 Str. .12" - .42" O.D.	40 (18)

TYPE - LAT (Arrester Terminals)

Application :

- This connector is intended primarily for bottom termination of lightning arresters to ground. May also be employed on top connections



PART NUMBER	STUD SIZE	CONDUCTOR RANGE O.D.	APPROX. WT. EACH LBS. (KG)
IGC207LA	3/8" - 16	#6 Sol. - 1/0 Str. .162" - .373" (4.1 - 9.5) mm	22 (9.9)

Electrical Rating:

- Voltage rating : 600 V

Standards:

NEMA CC1
IEEE 837



CUT OUT ASSEMBLY- FUSE HOLDERS

High-voltage standard drop out fuse holders

Application :

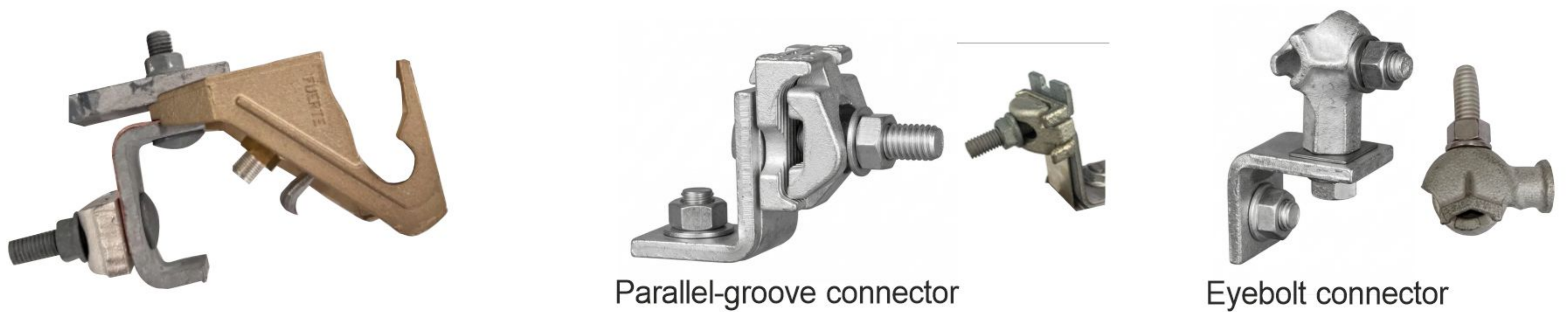
- A Type C cutout combines a fuse holder and disconnecting device, protecting distribution transformers or Overhead lines by interrupting current during faults or overloads.
 - Fiber Glass fuse tube- with UV resistant coating
- Glass-tube high-voltage fuse holder style used in dropout cutouts
 Supplying with glass-tube fuse holder with pull ring and contact hardware
 Available Fuse holder with contact hardware 15 Kv, 27 Kv and 38 Kv.



Drop-out Fuse Holder

PART NUMBER	VOLTAGE	RATED CURRENT	RATED FREQUENCY	BIL (Lightning Impulse)	INTERRUPTING CAPACITY
IFH15	15 kV	100 / 200 A	50 / 60 Hz	95 kV	Up to 12 kA
IFH27	27 kV	100 / 200 A	50 / 60 Hz	125 kV	Up to 12.5 kA
IFH38	38 kV Class (33-38 kV)	100 / 200 A	50 / 60 Hz	150 kV	Up to 12.5 kA

Hinge Connector Assembly for Dropout Fuse Cutout



PART NUMBER	VOLTAGE	RATED CURRENT	MATERIAL	ROTATION ANGLE
IHA152738	15 kV / 27 kV / 38 kV Cutouts	100 / 200 A	High Strength Copper / Bronze	90° TO 180° (drop-out Action)

Standards:

- IEEE C37.41 - Design & Testing of Cutouts
- IEEE C37.42 - Specifications for Cutouts
- IEC 60282-2 - High Voltage Fuses





AN ISO 9001:2015 CERTIFIED COMPANY



SCAN FOR



WEBSITE



LINKEDIN

Designed by :
BB : 99798 99294

Indian Metals Solutions Pvt. Ltd.

+91 90818 10388 | dj@indianmetalsolution.com | www.indianmetalsolutions.com

Works & Reg. Office : Plot No.3, Jay Hanuman Industrial Area, Moviya, Paddhari, Rajkot, Gujarat -360110, India.

Corporate Office : North 804 - Twinstar, 150 Feet Ring Road, near Balaji Hall, Rajkot, Gujarat, India. - 360002